



# Parts: Dust Collectors, Bag House

## Guide to Part Numbers

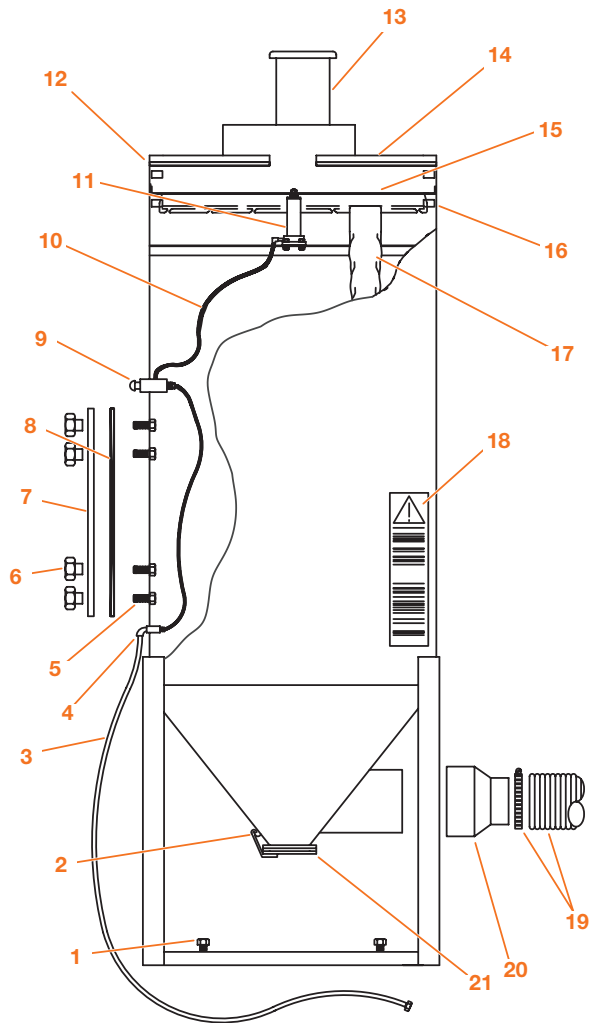
For DCM-80A (PN 112000), DCR-80 (PN 112100), DCM-200 (PN 113000), DCM-200A (PN 113001) & DCM-200B (PN 113002)

### "DCR" & "DCM" SERIES COMPONENTS

| Item | Description  | PART#  |
|------|--|--------|
| 1    | Bolt, levelling, 3/8" - 16 x 2" (4 required)   | 553892 |
| 2    | Latch and keeper (requires welding)  | 509581 |
| 3    | Hose with fittings, 1/4" x 16', dust collector   | 523161 |
| 4    | Adapter, 1/4" tube x 1/4" MPT (inlet)  | 521081 |
| 5    | Bolt, 3/8" - 16 x 1 1/4" (6 required)  | 551852 |
| 6    | Knob, 3/8" - 16 (6 required)   | 510461 |
| 7    | Access door, dust collector  | 760851 |
| 8 †  | Gasket, access door, 5/8" x 5/8", 103" section   | 525711 |
|      | Gasket, 5/8" x 5/8" (specify length)   | 525061 |
| †    | Valve, push-button, 1/8" NPT & #10 - 32, "3P"  | 517221 |
| 9    | Barbed fitting, 1/4" tube x #10 - 32, 2 per assembly   | 521101 |
|      | Adapter, 1/4" tube x 1/8" MPT, 90° (for air cylinder)  | 520432 |
| 10   | Tubing, 1/4" OD (8' required)  | 510541 |
| 11 † | Air cylinder, standard collector and auto shaker   | 515981 |
|      | Air cylinder, auto-pneumatic bag shaker only   | 515771 |
| 12 † | Gasket, top plate, 1/8" x 1/4" (8' for DCM-80A; 12' for others)                                | 523551 |
| 13   | Blower & blower motors ( <b>See page A45.</b> )  | —      |
| 14   | Top plate, DCM-80A   | 760841 |
|      | Top plate, DCM-200, DCM-200A & DCM-200B  | 760901 |
| 15   | Bag-rack weldment (DCM-80A)  | 760861 |
|      | Bag-rack weldment (DCM-200A)   | 760921 |
| 16   | Rubber bumper (8 required)   | 523541 |
|      | Dust bag, cotton sateen (12 required for DCM-80A & DCR-80, 30 required for DCM-200 & DCM-200A) | 515521 |
| 17 * | SuperSmooth dust bag for DCM-200B (12 required)  | 516181 |
|      | Decal, Empire logo   | 564305 |
|      | Decal, orange dot strip  | 564301 |
|      | Paint, 6-oz. aerosol, beige  | 564476 |
| 18   | Decal, Instruction/Warning   | 567405 |
| 19   | Ducting & adapters ( <b>See page A46.</b> )  | —      |
| 20   | Adapter, 10 1/8" ID x 6" OD, DCM-200   | 761801 |
| 21 † | Gasket, clean-out door, dust collector   | 524351 |

\* Recommended spare part—Consumable wear item

† Essential component to prevent downtime



### Bag-House Dust collector Options

|   | PART NUMBERS      |                    |          |
|---|-------------------|--------------------|----------|
|   | FACTORY INSTALLED | CUSTOMER INSTALLED | SEE PAGE |
| <b>Automatic bag shaker</b> cleans bags thoroughly every time the system is turned off.                 |                   |                    |          |
| <b>Electric shaker</b> for all bag-house collectors   | 140340            | 140390             | A65      |
| <b>Pneumatic shaker</b> for DCM-80A   | 140685            | 140686             | Call     |
| <b>Pneumatic shaker</b> for DCM-200, DCM-200A & DCM-200B  | 140683            | 140684             | Call     |
| <b>HEPA filter</b> captures very fine particles.  | 140215            | 140215             | —        |
| <b>HEPA filter, pressure differential gauge assembly</b> informs operator regarding filter cleanliness. | 140221            | 140221             | —        |
| <b>Leg extension kit</b> raises collector so larger collection drum can be placed underneath.           |                   |                    |          |
| <b>Kit</b> for DCM-80A  | 140170            | 140170             | —        |
| <b>Kit</b> for DCM-200, DCM-200A & DCM-200B   | 140180            | 140180             | —        |
| <b>Lid assembly</b> for 55 gallon drum attaches securely to clean-out door.                             | 140155            | 140155             | A65      |
| <b>Manometer</b> keeps operator informed regarding bag cleanliness.                                     | 140344            | 140398             | —        |
| <b>Sound attenuator</b> reduces noise in the work place.  |                   |                    |          |
| <b>Attenuator/damper</b> for DCM-80A & DCM-200  | 140361            | 140361             | —        |
| <b>Attenuator/damper</b> for DCM-200A   | 140769            | 140769             | —        |
| <b>Attenuator/damper</b> for DCM-200B   | 140680            | 140680             | —        |

# Parts: Dust Collectors, SEM-2

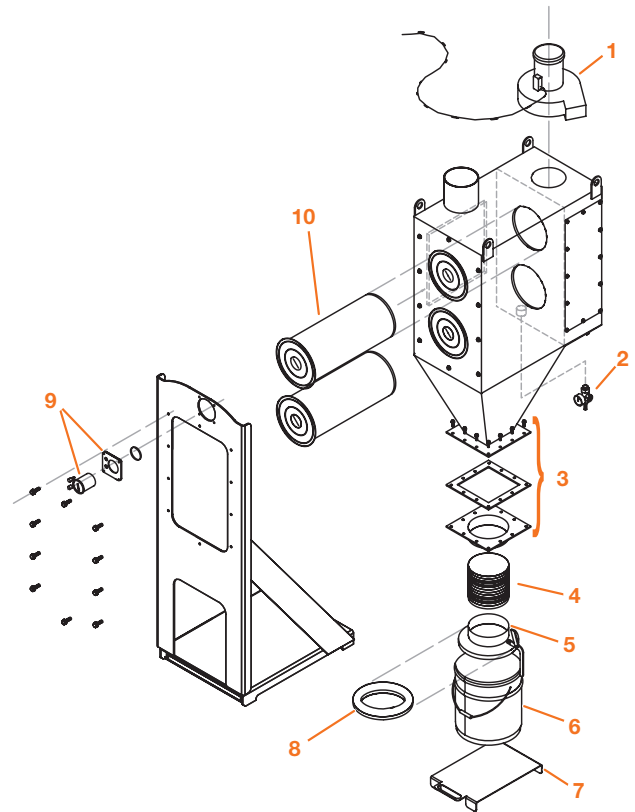
## Guide to Part Numbers

### SEM-2 COMPONENTS

| Item | Description                              | PART # |
|------|--|--------|
| 1    | Blower assembly (See page A45.)          | —      |
|      | Collector assembly                       | 113033 |
| 2    | Regulator-gauge/air supply assembly      | 140851 |
|      | Diaphragm valve, 2 required (not shown)  | 516329 |
|      | Rebuild kit, diaphragm valve (not shown) | 516328 |
| 3    | <b>Call factory.</b>                     | —      |
| 4    | Hose, 7" ID x 6" long                    | 516104 |
| 5    | Cover                                    | 516106 |
| 6    | Waste pail                               | 509611 |
| 7    | Dust-drum platform                       | 756682 |
| 8 †  | Gasket, Neoprene, 9½" ID x 12" OD        | 515710 |
| 9    | Mini-helic package                       | 550450 |
| 10 * | Filter assembly (2 required)             | 532523 |

\* Recommended spare part—Consumable wear item

† Essential component to prevent downtime



**SEM-2 Dust collector Options**  
 Photohelic cartridge cleaning (See page A66.)

**PART #**  
 140810

# Parts: Dust Bag

## Guide to Part Numbers

### DUST BAG COMPONENTS

| Item | Description                     | PART NUMBER |
|------|---------------------------------|-------------|
| 1    | Clamp, 4" adjustable            | 515841      |
| 2 *  | Dust bag, 4" inlet, 30 sq. ft.  | 515765      |
| 3    | Closure clamp                   | 520461      |
|      | Blower assembly (See page A45.) | —           |

\* Recommended spare part—Consumable wear item

