

JET WASHING



PCS SYSTEMS

A SOLVENT FREE WORLD.





THE ULTIMATE IN AQUEOUS CLEANING

Finally, there is a STANDARD parts cleaning system built to such a high level that you don't have to risk customization.

THE **PURIFIER/PCS SYSTEMS**

Today, there are over 15,000 Better Engineering aqueous cleaning systems-like the Purifier/PCS's-in service throughout the world. Established in 1960, Better Engineering pioneered the field of aqueous cleaning and continues to set the standard for precision cleaning machinery.

THE PURIFIER/PCS SYSTEMS

After working years with the largest companies in the world to push the boundaries of water-based cleaning, Better Engineering had a mandate...design a STANDARD system that meets the most stringent cleanliness requirements, that defies improvement, and hence saves customers the cost and anguish of customizing a system. Seven (7) upgrades were combined into a package such that the package could be incorporated into any Purifier model. The result is a PURIFIER/PCS SYSTEM, the Ultimate Precision Cleaning System.

CLEANING WITH WATER... THE PURIFIERS

Better Engineering's "Purifier" machinery is and has been the best-selling line of industrial jet washers in the world. Using aqueous spray technology, parts are automatically cleaned with a recirculated detergent and water solution. The force of the spray jets in combination with heat (130°- 180° F) and the chemical action of the detergent strip away oil, grease, carbon etc...in 1-15 minutes.

Now Better Engineering has set a whole new standard.

OUR CUSTOMERS INCLUDE

- G.E. Aircraft
- General Motors
- Martin Marietta
- Japan Airlines
- Bendix
- Westinghouse
- Ford
- Caterpillar

MULTI-STAGE, CELLULAR CLEANING

A "PCS" jet washer is the ideal cellular cleaning system.

Parts are washed, rinsed, and dried in ONE chamber and in ONE fully automatic cycle. The average cycle time is just 15-20 minutes.

Now you don't have to move your parts from tank to tank for precision cleaning.

F-4000-PCS

The F-4000-PCS, shown in pictures 1 - 3, is just one (1) of seven (7) Purifier/PCS models.

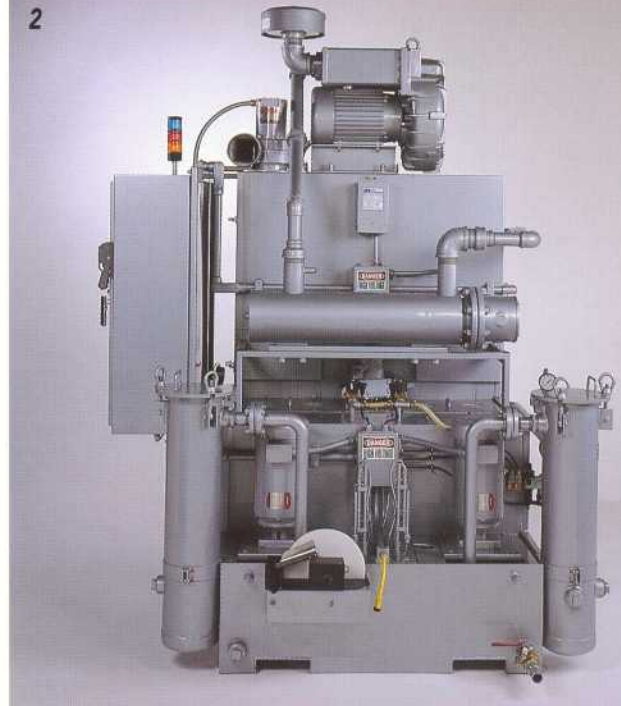
Picture 1 shows the standard spray manifold configuration.



THE CONTROLS

The system shown in pictures 1 and 2 has the optional Allen Bradley "Panelview 550" processor with a touch screen.

The standard control package, shown in picture 3 uses all relay logic and includes external timers for each stage (wash, rinse and dry).



THE PCS CONVERSION

Any one (1) of these six (6) "Purifier" models (see the "Purifier" brochure) plus the new F-6000LX-P (see picture 4 above) can be transformed into a Purifier/PCS system.

F-4000-PCS

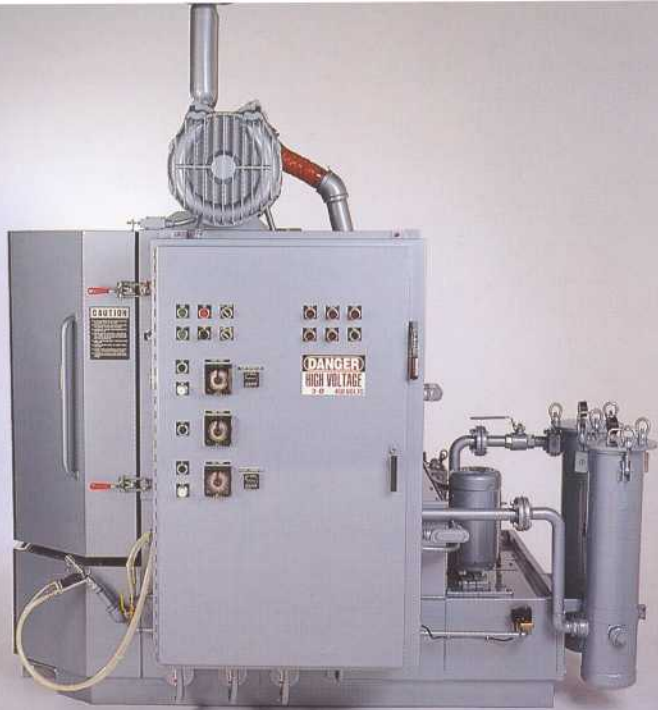
F-4000LX-PCS

F-5000LX-PCS

T-5000-PCS



3



MORE STANDARD FEATURES

- Additional standard features include:
- "LWS-F1" water level controls for both tanks
 - Emergency high back-up sensors for both tanks
 - "OSW-11" oil skimmer on the wash tank
 - "ATC-24-2" automatic timer for heat and skimmer control

4



OPTIONS

Options for the "PCS" systems are: 1) the "ILF-22" micron filtration system; 2) the "ARC-11" fresh water rinse cycle; 3) the "ZX" upper tier basket; 4) "RCB-11" rubber coating for the basket (s); 5) the "PLC-22" Allen Bradley "Panelview 550" processor and (6) air drying system (consult dealer).

Picture 4 shows an F-6000LX-PCS (60" diameter turntable) with special features for G.E. Aircraft Engines.

"PCS" SPECIFICATIONS

For exact specifications, dimensions, and layout drawings of a "Purifier/PCS" system, contact your local Better Engineering dealer.

The features of the "PURIFIER" jet washers (see "PURIFIER" brochure) carry over to the "PURIFIER/PCS" systems except for the obvious upgrades outlined in this brochure and the floor pitch; on a "PCS" system, the tank floor has a straight 2" pitch from front to back (there is no 2" deep canal or diversion plate).

*The new F-6000LX-PCS is not listed.

T-6000-PCS

T-7000-PCS



MODEL	F-4000-PCS	F-4000LX-PCS	F-5000LX-PCS	T-5000-PCS	T-6000-PCS	T-7000-PCS
WORKING DIMS.	40" dia. x 40" h	40" dia. x 60" h	50" dia. x 60" h	50" dia. x 31" h	60" dia. x 31" h	70" dia. x 31" h
RESERVOIRS (2) -GAL/EA	100	100	150	150	200	225
-HEAT/EA	18kw	18kw	18kw	18kw	27kw	27kw
PUMPS (2) -HP/EA	5	7.5	10	7.5	10	10
-OUTPUT/EA	100 GPM/ 60 PSI	100 GPM/ 65 PSI	150 GPM/ 70 PSI	150 GPM/ 60 PSI	200 GPM/ 60 PSI	200 GPM/ 60 PSI

THE 7 "PCS" UPGRADES

1. STAINLESS STEEL

...on a PCS system, all wetted parts are type 304 stainless...cabinet, pumps, spray nozzles, valves, etc...

2. TWO INTEGRATED TANKS

...a "PCS" system is really two (2) jet washers rolled into one (1). There are two (2) heated reservoirs, two (2) pumps, etc...The high volume wash stage (100 + GPM) is followed by an equally powerful rinse stage (100 +GPM).

3. HIGH VOLUME RINSING

...essential to many applications, the high volume rinse stage can be automatically followed by an optional 3rd, low volume rinse stage... pneumatic "plungers" are choreographed with delay timers to keep these solutions segregated.

4. DRYING (OPTIONAL)

...After the wash and rinse stages, the parts are dried with a high velocity (15,000 ft./min.) blast of hot (typically 260 F) air. The machine has a "REGENERATIVE BLOWER", and a heating system that has triple, no-fault protection.

5. THE CONTROL SYSTEM

...a "PCS" jet washer has a deluxe control system which is both comprehensive and user friendly. The standard system uses all relay logic and has external timers for each stage (wash, rinse, etc.)...With the "PCS-22" option, the timers and many of the lights and relays are replaced with an Allen Bradley "PANELVIEW 550" PLC with touch screen.

6. PCS FEATURES

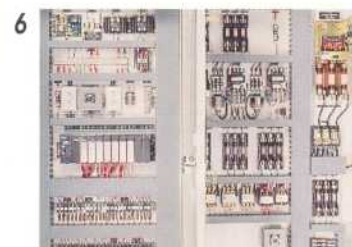
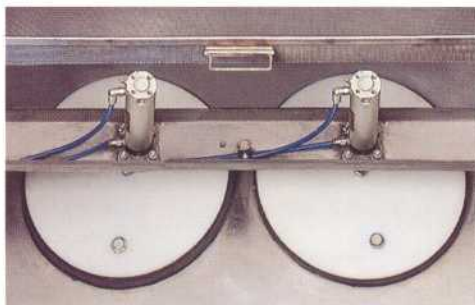
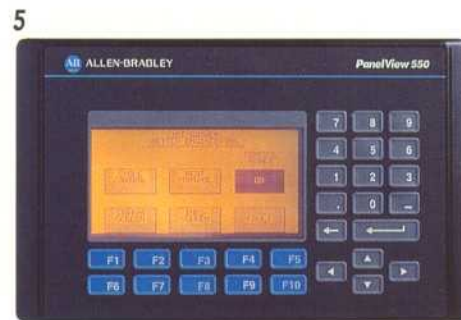
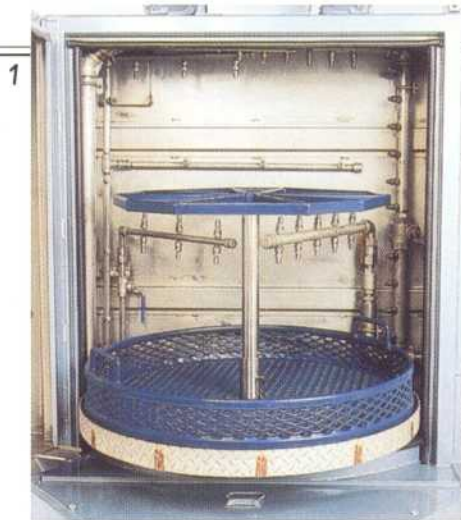
...many features which are optional on a Purifier are standard on a Purifier - PCS System

- full cabinet insulation (1")
- main fused disconnect with panel lock-out
- "Emergency Stop" control, etc...

7. PCS SUPPORT

"PCS" customers enjoy the highest level of factory/dealer support:

- work with "B.E.'s" lab to prove the process
- two day training and run-off sessions at Better Engineering
- comprehensive documentation
- installation assistance by your local "B.E." dealer



**OVER 15,000 SYSTEMS
IN SERVICE**

Better Engineering has an extensive line of water-based parts washing machinery. Examples of these systems are:

- 1 The Cyclojet 1 cleans small, complex parts that need to be tumbled or orbited. This system has two (2) slide-out baskets and is capable of a five (5) stage wash/rinse/dry cycle. The Cyclojet 1, using just 3 ft. x 4 ft. of floor space, does more work than systems that are 20 ft. long.
- 2 The Cyclojet 3 is the big brother of the Cyclojet 1. This stainless steel Jet Washer has four (4) slide-out baskets, two (2) tanks for high volume rinsing, and a hot air drying system.

**CALL YOUR "B.E." DISTRIBUTOR
FOR A FREE DEMO:**

RODECO COMPANY

Metal Finishing Equipment and Supplies
5811 Elwin Buchanan Drive
Sanford, North Carolina 27330
(919) 775-7149 • Fax (919) 774-3130



Better Engineering Mfg., Inc.

8361 Town Center Court
Baltimore, Maryland 21236-4964
410-931-0000
Toll Free 1-800-229-3380
Fax (410) 931-0053
www.betterengineering.com

3 The Impulse 2 is the smallest turntable Jet Washer in Better Engineering's line. This system, measuring only 35" from front to back, has a 25" turntable diameter and 18" work height.

4 The Cyber-Jet conveyor washer line consists of five (5) standard modules that can be combined in any quantity or sequence to form the perfect multi-stage system.

5 The C-5000-P Carousel Jet Washer cleans, rinses, and dries parts in one revolution. These systems are ideal for "work cells", which don't have space for a linear conveyor system.

